

MTEE Company Presentation

MAS Generator sets

16.06.2026

MITSUBISHI TURBOCHARGER AND ENGINE EUROPE

Our production facilities and offices are located in Spikkestad 35 km from Oslo

- Employees – 24
- Office facilities - 600 m²
- Factory/Stock area -1600 m²
- Load testing capacity - 3300 kW 690V
- Lifting capacity - 32 T.



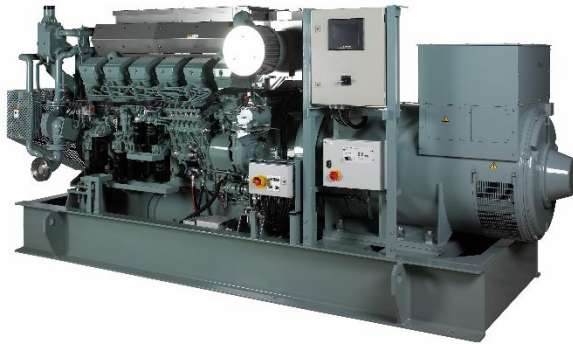
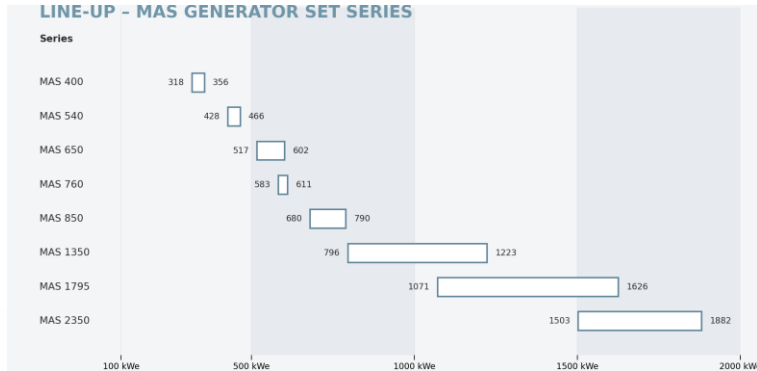
MITSUBISHI TURBOCHARGER AND ENGINE EUROPE

Production and testing in house at Spikkestad:



Full load testing on diesel generator set 3300 kWe (Up to 690V)

MITSUBISHI TURBOCHARGER AND ENGINE EUROPE



- Robust and Reliable Power Solution
- Exceptional Durability
- Optimized Performance
- Advanced Control Systems
- Comprehensive Support Services

Generator set	Engine type	Voltage [V]	Frequency [Hz]	Generator output [kWe]	Generator output [kVA]
MAS-400-1500	S6B3-T2MPTAW-20	400	50	318	399
MAS-400-1800	S6B3-T2MPTAW-19	440	60	356	445
MAS-540-1500	S6A3-MPTAW-20	400	50	428	478
MAS-540-1800	S6A3-MPTAW-19	440	60	466	549
MAS-650-1500	S6R-MPTAW-5	400	50	517	646
MAS-650-1800	S6R-MPTAW-4	440	60	602	752
MAS-760-1500	S6R2-T2MPTK-5	400	50	611	764
MAS-760-1200	S6R2-T2MPTAW3	440	60	583	729
MAS-850-1500	S12A2-MPTAW-5	400	50	680	850
MAS-850-1800	S12A2-MPTAW-4	440	60	790	988
MAS-1350-1500	S12R-MPTAW-5	400	50	1056	1343
MAS-1350-1800	S12R-MPTAW-4	440	60	1223	1529
MAS-1350-1200	S12R-MPTAW-9	440	60	796	1013
MAS-1795-1500	S16R-MPTAW-5	400	50	1436	1806
MAS-1795-1800	S16R-MPTAW-4	440	60	1626	2032
MAS-1795-1200	S16R-MPTAW-9	440	60	1071	1344
MAS-2350-1500	S16R2-T2MPTAW-5	400	50	1882	2352
MAS-2350-1200	S16R2-T2MPTAW-11	440	60	1503	1882

Standard

- Alternator concept: double bearing, brush-less AVR-controlled machine
- Governor and speed controller
- Control System cabinet
- Starter cabinet cabinet
- Standard Marketing documentation
- Antivibration mounts
- HT/LT Flexible bellows
- Protection from moving parts
- Prelube pump with oil drain/filling
- LT Pump
- Drip trays
- Exhaust compensator

Options

- Emission reduction (IMO Tier III)
- Exhaust temperature monitoring
- Crankcase vent kit
- Silencer
- Plate Heat Exchangers
- Expansions tanks LT
- Remote Genset Control Panel
- Start battery, battery box and charger
- Battery isolation switch cabinet
- Class

Datasheet - Selections

SCOPE OF SUPPLY

		<ul style="list-style-type: none"> ● Standard item ○ Option
Engine	Mitsubishi engine	●
	SOLAS compliant exhaust insulation and protection for fuel and oil connections	●
	Heavy duty frame with vibration absorbers	●
	Electrical Pre-lube pump with oil drain/filling	●
	Cooling heater with internal circulation pump and flexible below connections	●
	Alarm switch for fuel leakage	●
	Woodward Pro Act digital + Governor system & speed controller 2301E (built into control cabinet)	●
	Protect guard for moving parts	●
	LT/HT interface flexible bellows	●
	Electrical LT pump and Thermostat (delivered loose supply for optimal installation in vessel)	●
	Drip tray oil and fuel filter,	●
	Exhaust compensator	●
	Lifting lugs	●
Generator	Air-cooled Generator IP 23 with Digital AVR	●
	PT-100 bearing and windings	●
	Anti-condensation heater	●
	Flexible coupling with TVC calculation	●
	Droop CT	●
Control system	Control system (cabinet) including package aux class including sensors and mounting	●
	Electrical starter cabinet: for heater, lubrication oil primer pump and LT pump Based on Auto-Maskin	●
Documentation	IMO2 certificate	●
	Drawing and design engineering (GAD, P&ID, Electrical Drawings)	●
	Test running of complete sets at Spikkestad, Norway before shipment / Test Report	●
	Mitsubishi Warranty	●
Options (mounted)	Water cooled Generator	○
	Mechanical LT cooling water pump v-belt driven and Thermostat	○
	Exhaust temperature monitoring	○
	Crankcase ventilation filter kit	○
Options (loose)	Silencer (35dB)	○
	Plate Heat exchanger	○
	Expansions tanks LT (40l) / HT (60l)	○
	Remote Genset Control Panel	○
	Start battery, battery box and Battery charger	○
	Battery isolation switch cabinet	○
	Class certification (Genset incl. control system)	○

<https://engine-genset.mhi.com/marine-generator-sets>

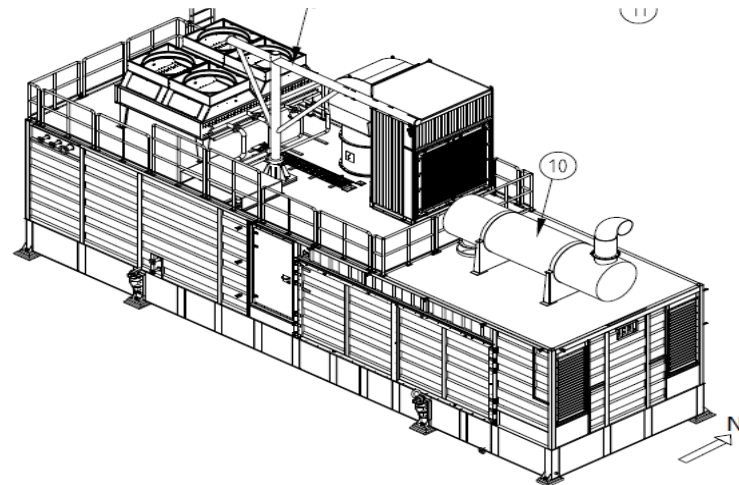
<https://mteen.sharepoint.com/sites/MTEEDistributorResourcePortal>

Containerized Generator sets

- **Compact and Robust Design**
- **Plug-and-Play Convenience**
- **Energy-Efficient Performance**
- **Advanced Remote Monitoring**
- **Customizable Configurations**



- Container with diesel storage tank and spill tank in the bottom of the container.
- Day tank and diesel purifier system in a separate room inside the container.
- Generator set (Mitsubishi engine with alternator on base frame)
- Generator set circuit breaker panel
- Generator set auxiliary power panel
- EGCP (Essential Generator Control Panel)
- Battery breaker panel
- Interface panel
- Firefighting system, in a separate room inside the container (argonite)
- Radiator/cooler unit on the roof of the container
- Silencer on the roof of the container
- Fire damper air outlet
- Air filter, air supply fan on the roof of the container
- Davit on container roof for maintenance lifting
- Trolley beams inside for maintenance usage



Jotun FPSO – 2021 Emergency generator set MAS-1795 -1500kW at 1500 rpm



MITSUBISHI TURBOCHARGER AND ENGINE EUROPE

Resolute Fishing Vessel – 2019 Aux/Emergency generator sets: 1 X MAS-1350 - 1270kW at 1800rpm

2 x MAS-650 – 635kW at 1800rpm

1 x 6D24 (emg/harbor) 218kW at 1800rpm



MITSUBISHI TURBOCHARGER AND ENGINE EUROPE

Sendje Berge FPSO - 2013

Emergency generator set in container complete delivery MAS-1350 828kW at 1800 rpm



MITSUBISHI TURBOCHARGER AND ENGINE EUROPE

MOVE THE WORLD FORWARD

**mitsubishi
heavy
industries
group**

